

ACTIVITIES

Greenhouse Spa & Salon, 9	8:00am - 10:00pm
Fitness Center, 9	6:00am - 9:00pm
Casino, 2	9:00am - close

SHOPPING

The Shops, 3	9:00am - 11:00pm
--------------	------------------

Port Shopping, 2 **TBC**

SERVICES

Shore Excursions, 11	10:00am - 12:00pm 4:00pm - 5:00pm
Photo & Video Gallery, 3	9:00am - 10:00pm

DINING

The Dining Room, 2	5:00pm - 9:00pm
Pinnacle Grill, 2* <i>Rudi's Sel de Mer</i>	5:30pm - 9:30pm
Tamarind & Nami Sushi, 11*	5:30pm - 9:30pm
Canaletto, 9*	5:30pm - 9:30pm
Lido Market, 9 <i>Breakfast</i> <i>Wild Harvest</i>	7:00am - 10:00am 11:30am - 5:00pm
<i>Lunch</i> <i>Select Stations</i> <i>Dinner</i> <i>Late Night Snack</i>	12:00pm - 3:00pm 3:00pm - 5:00pm 5:30pm - 8:30pm 9:30pm - 1:30am
New York Pizza, 9	Open 24 Hours A Day
Dive-In, 9	11:30am - 6:00pm
Explorations Café, 11	6:00am - 10:00pm

*Charges apply. Dial 88 for reservations.

Guests aged 21 and over are welcome to purchase and consume alcoholic beverages. Proper identification is required, and guests will be asked to verify their age.

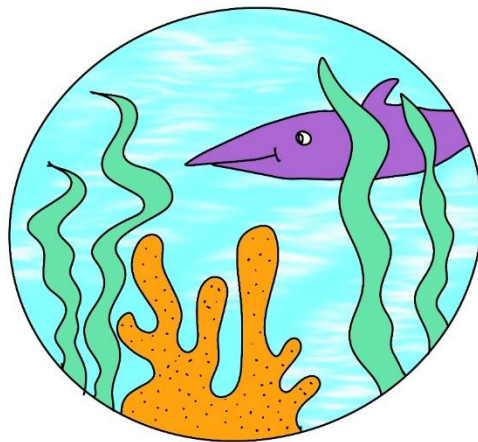
ERRATA ET CORRIGENDA ET CETERA

It has been brought to our attention that Day 4's newsletter mistakenly gave the total rum production of St Croix as 14.5 MegaDaiquiris (Mdq). A community member has pointed out that the correct amount is actually 1,280 MdQ or 1.28 Gigadaiquiris (Gdq).

Media Team deeply regrets this error of basic arithmetic. The Ship's Mathematician has been sacked. Future measurements in these pages will reflect our Team's Commitment to Arithmetic. And Daiquiris.

PRINCIPAL SABOURIN'S TWO-SENTENCE MYSTERIES, EPISODE TWO:

Someone has stolen Chris's purse. Actually, never mind—Chris left their purse by the couch.



LAST CHANCE MERCH SALE

It is upon us, already: your last chance to buy JoCo Cruise and performer merch! A satellite store will be set up in the **Lido Pool Area**. Act now or forever hold your peace. Or do something else.



Holland America Line®
SAVOR THE JOURNEY

WHEN & WHERE

AT SEA

Thursday - March 10, 2022

TODAY'S THEME
BIRTHDAY DAY

ALL ABOARD
**ALL DAY,
PREFERABLY**

*"There are Good Ships and Bad Ships
And some ships at sea*










*But the best ships are FRIENDSHIPS
And forever they'll be."*

- *Ship's Listener, at the Sea View Bar at
around 12.30 am*

TODAY'S EVENTS

TIME	ACTIVITY	LOCATION
7:00am	Abs Class	Fitness Center, 9
7:30am	Sunrise Stretch	Fitness Center, 9
8:00am	Body Sculpt Boot Camp \$20	Fitness Center, 9
9:00am	HAL Poncho's Clearance Sale: Up to 75% Off	The Shops, 3
	\$1/\$2 No Limit Texas Hold'em Cash Game	Casino, 2
	Tour de Cycle \$20	Fitness Center, 9
9:30am	Managers Daily Deal: Charms of the Day - Ships Wheel & Gift Box	The Shops, 3
10:00am	Stretch & Release	Fitness Center, 9
	Shore Excursions Desk Open until 12:00pm	Shore Excursions, 11
	Guess the Origin of Zultanite	The Shops, 3
10:30am	Louis Vuitton Collection Presentation	The Shops, 3
11:00am	Increase Your Metabolism	Fitness Center, 9
	EFFY Outlet & Sample Sale	The Shops, 3
12:00pm	Spa Special: Top-to-Toe	Greenhouse Spa, 9
2:00pm	Relieving Back Pain	Fitness Center, 9
3:30pm	Nahla Shopping Safari	The Shops, 3
4:00pm	Happy Hour - Enjoy a Second for Only \$2	Billboard Onboard, 2 Ocean Bar, 3
	Shore Excursions Desk Open until 5:00pm	Shore Excursions, 11
4:30pm	Designer Fragrances Sale	
5:00pm	Evening Stretch	Fitness Center, 9
6:00pm	Complimentary Fine Jewelry Cleaning	The Shops, 3
6:30pm	Complimentary Liquor Sampling	The Shops, 3
8:30pm	Glamour & Grace Diamonds Sale	The Shops, 3
9:00pm	EFFY Jewelry Auction Preview	The Shops, 3
11:00pm	\$416,000 Paradise Lotto Jackpot Drawing	Casino, 2
11:30pm	Stay and Play Slots All Night	Casino, 2

JOCO CRUISE ALIGNMENT QUIZ RESULTS!

LAWFUL GOOD  <i>You are a loyal knight of the Order of JOCO Cruise.</i>	NEUTRAL GOOD  <i>You're not having fun until everyone ELSE is having fun, darn it.</i>	CHAOTIC GOOD  <i>Your efforts to help are as appreciated as they are confusing.</i>
LAWFUL NEUTRAL  <i>If you're not already an authority figure here, you will be soon.</i>	TRUE NEUTRAL  <i>The Eye of the Storm, you are a rare bird. Or maybe you're JoCoBot.</i>	CHAOTIC NEUTRAL  <i>"Let's make this cruise more interesting, shall we?"</i>
LAWFUL EVIL  <i>Harsh but fair; you're an essential part of the gaming</i>	NEUTRAL EVIL  <i>"Can I interest you in some JoCo-branded NFTs?"</i>	CHAOTIC EVIL  <i>Are you fun? Yes. Are you trouble? Also yes.</i>

Answer Key:

Q 1, 2,3: Good–Evil. A: 3 points, B: 2 points; C: 1 point.
 Q 4,5,6: Lawful–Chaotic. A: 3 points, B: 2 points; C: 1 point.

Good: 7-9 pts
 Neutral: 4-6 pts
 Evil: 1-3 pts

Lawful: 7-9 pts
 Neutral: 4-6 pts
 Chaotic: 1-3 pts

MORDLE ANSWER:

M	O	R	D	L	E
---	---	---	---	---	---

PRACTICE YOUR SHIP SILHOUETTE IDENTIFICATION SKILLS!

There are an awful lot of ships out there these days. For those of you who enjoy scanning the horizon for our fellow voyagers or possible pirates, the Ship's Intelligence Team has put together this quick guide.



This is the *Nieuw Amsterdam*, aka our wonderful ship. If you are seeing this on the horizon, we would very much like to know how you got there.



This is the *Old Amsterdam*, our ship's greatest rival! If you see this silhouette approaching, think of an appropriately dismissive and haughty gesture to display.



This is the outline of the Flying Dutchman. Legend says she was cursed (blessed?) to cruise the seas forever when her captain sold his soul for some more dramamine.



This is the Silhouette of JoCo 2055, which (we are reliably informed) has travelled back in time to deliver a warning to us to avoid the fate of [redacted].



"In his house at Rl'yeh, dead Cthulhu lies dreaming."